

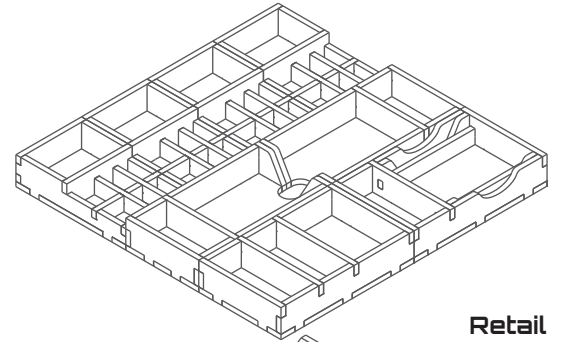
FS-BRASS insert compatible with Brass: Birmingham® or Brass: Lancashire® insert works equally well with both Retail and Deluxe editions



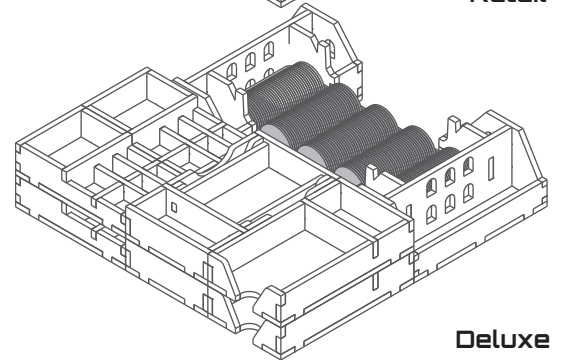
Assembly Instructions

The package contains 4 sheets, two of them are identical to the other two.
 The part marked in grey on sheet B2 is to be discarded.
 After assembly the trays are put in either one or two layers in the original game box.
 Ordinary PVA glue is required when assembling each tray.
 Please make sure you dry-assemble each tray correctly before gluing it together.
 Please check www.foldedspace.net for general assembly tips.
 Note that Tray 4 has two variants: 4a for Brass: Birmingham, and 4b for Brass: Lancashire.

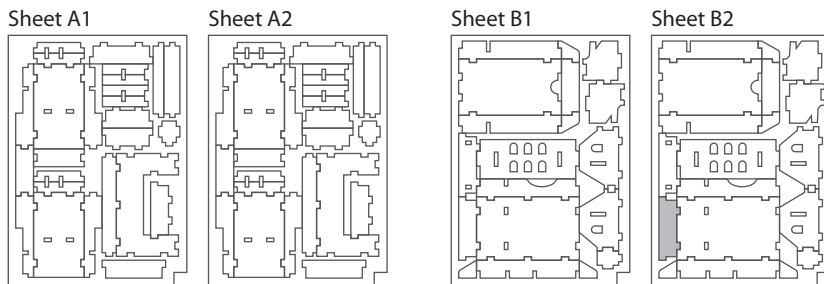
FS-BRASS



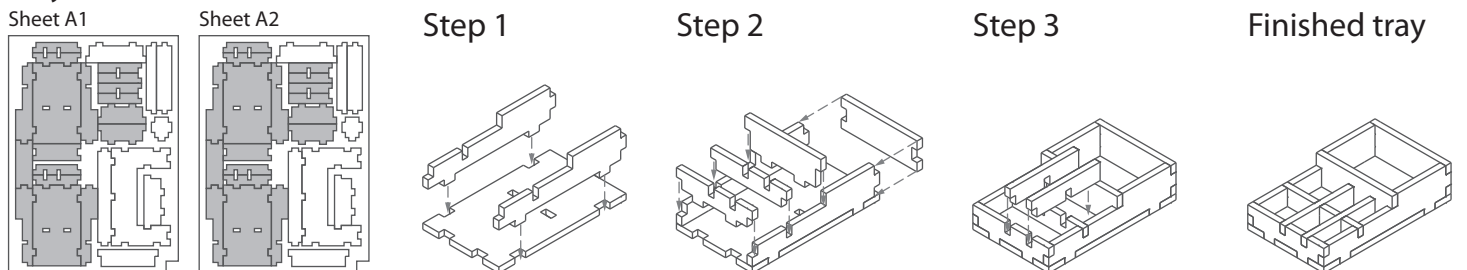
Retail



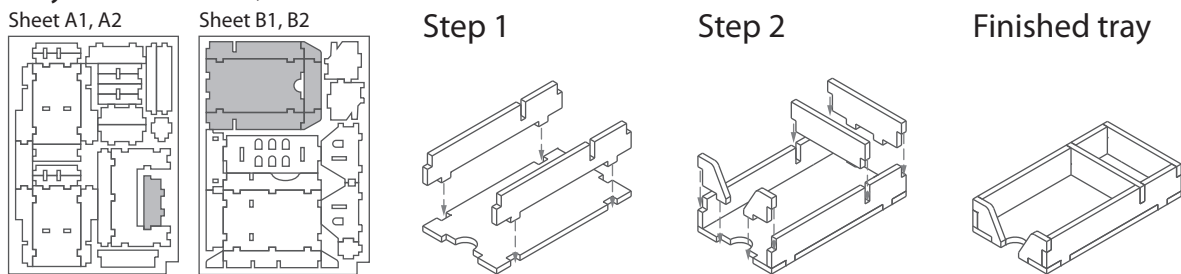
Deluxe



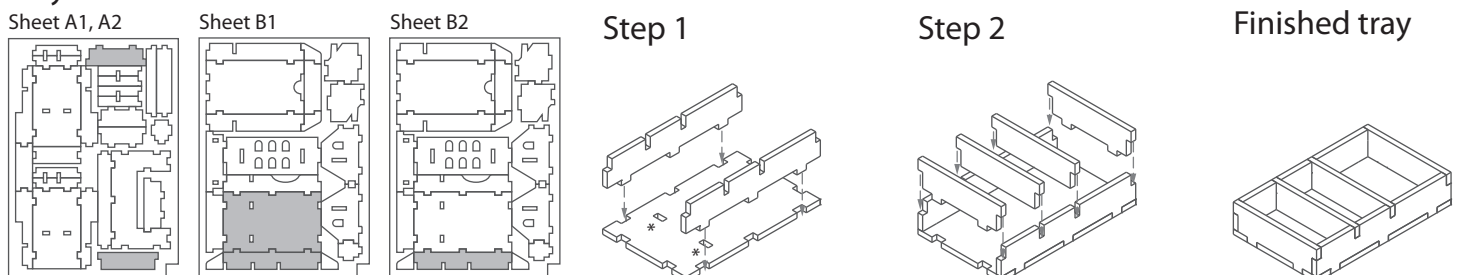
Tray 1a, 1b, 1c & 1d (the trays are identical)



Tray 2a & 2b (the trays are identical)



Tray 3

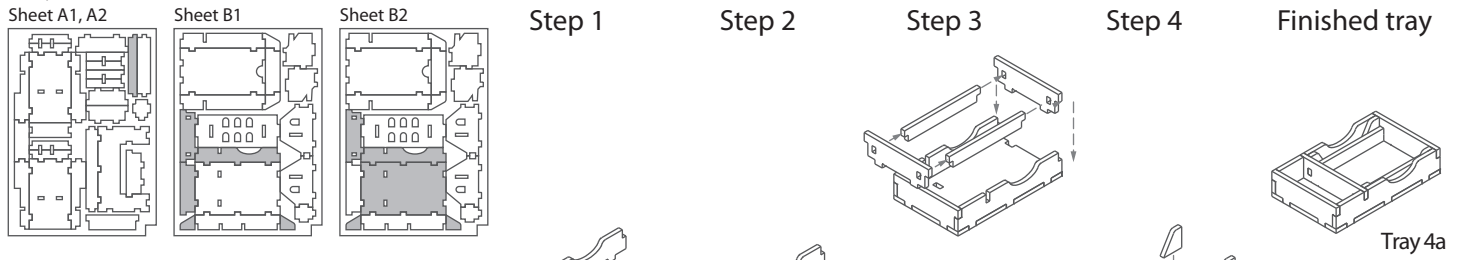


*Note: do not remove the filler for the two holes in the base. These will be held in place by the glue on the bottom of the left-hand middle divider.

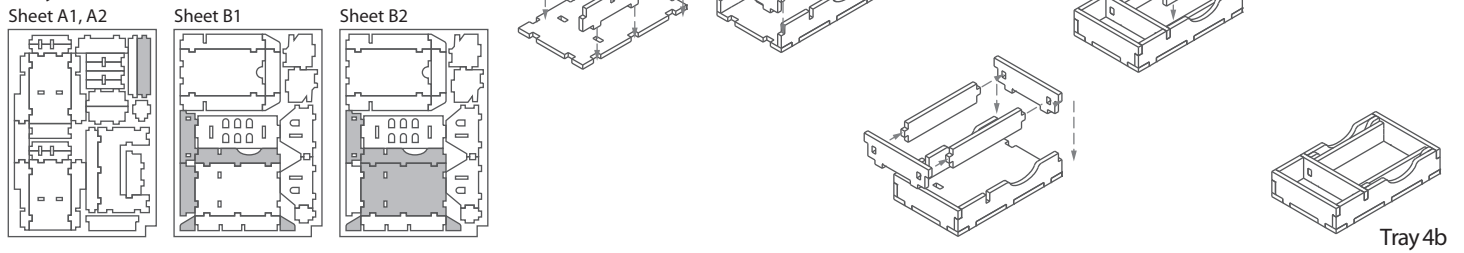
FS-BRASS compatible with Brass: Birmingham® or Brass: Lancashire®
insert works equally well with both Retail and Deluxe editions



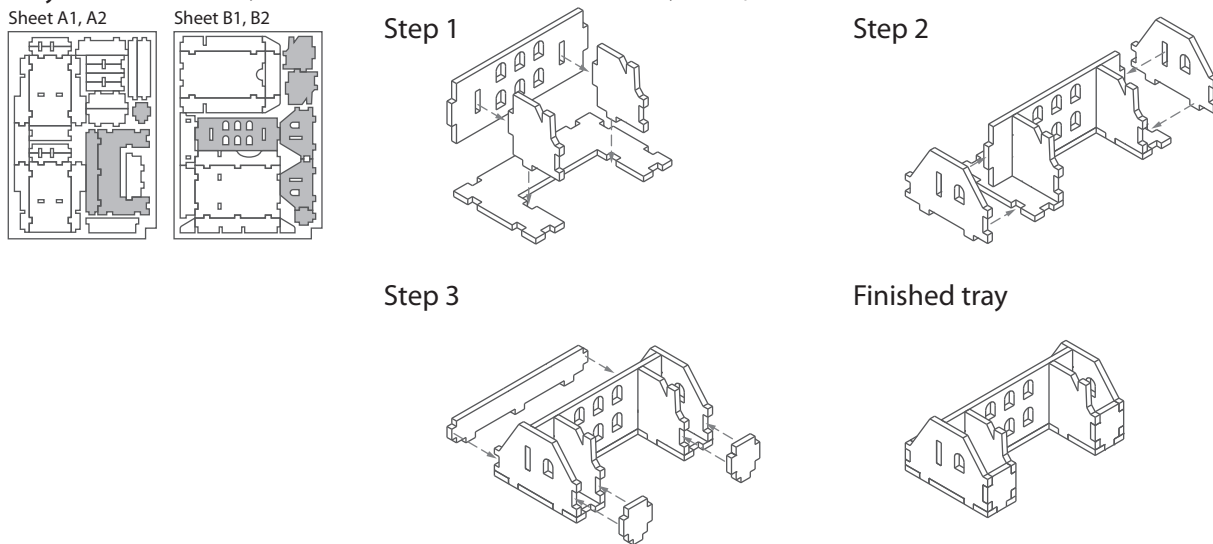
Tray 4a (this tray variant is for Brass: Birmingham)



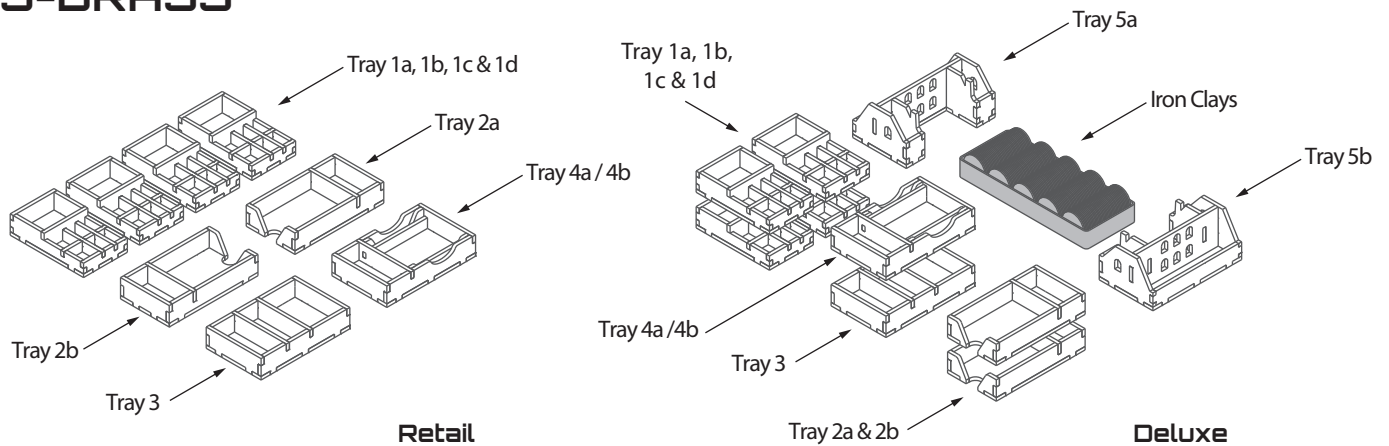
Tray 4b (this tray variant is for Brass: Lancashire)



Tray 5a & 5b (these trays are for the Deluxe edition to hold the iron clay box in place)



FS-BRASS



Tray legend:

Tray 1a, b, c, d - player pieces

Tray 2a - location & industry cards, coal cubes

Tray 2b - location & industry cards, iron cubes

Tray 3 - money tokens

Tray 4a - beer barrels, merchant tiles, and other cards

Tray 4b - cotton market tiles & marker, and player aid cards

Tray 5a, b - filler trays for holding iron clay box in place

Please check www.foldedspace.net for photos of this insert in use.

Tip: Keep the instructions in the bottom of your board game box as a reminder of how the insert fits together.